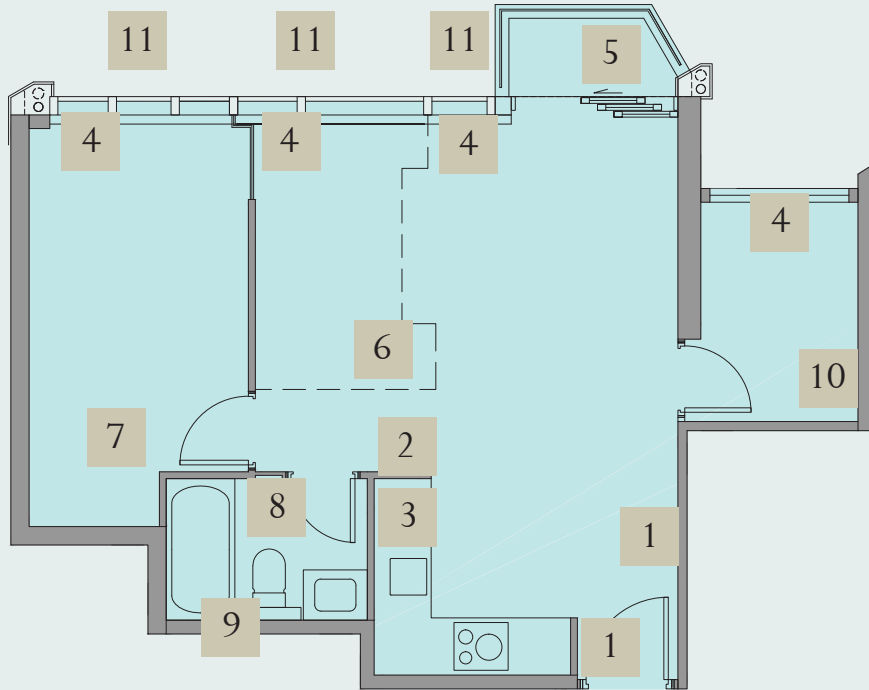


O A S I S
K A I T A K

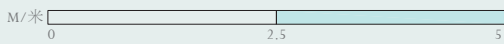
Unit B, 28/F, Tower 2 (Unmodified Show Flat)

第 2 座 28 樓 B 室 (無改動示範單位)

Location of Notices 告示位置



Scale比例



Notice 1 告示 1

This show flat is for showing the residential property concerned only and does not constitute and shall not be construed as constituting any representation or warranty in respect of the view from any residential property in the Development or the external appearance of any part of the Development, whether or not the external finishes, external pipes, or appearance of any part of the Development have been shown.

本示範單位僅作展示相關住宅物業之用，並不構成亦不得詮釋為任何關於發展項目任何住宅物業景觀或發展項目任何部份之外觀之陳述或保證，不論是否可能有展示發展項目任何部份之外牆裝修物料、外在喉管或外觀。

O A S I S
K A I T A K

There is slight difference in dimensions of this show flat and of (if any) the bay window, utility platform and balcony from those as specified in the sales brochure, and the difference is due to the finishes on the enclosing walls or boundary walls or internal partitions of the unmodified show flat.

由於此示範單位的圍封牆或邊界牆或內部間格的裝修物料所致，此示範單位及(如有)其窗台、工作平台及露台的尺寸與售樓說明書所指明的尺寸略有分別。

O A S I S
K A I T A K

Exposed pipes will be hidden by the false ceiling in the actual unit. Those exposed pipes have not been provided in this show flat.

實際單位內之外露喉管將被假天花隱藏。該等外露喉管在此示範單位內並無提供。

O A S I S
K A I T A K

This Home Automation Pad of home automation system is an appliance to be provided to residential properties to control the on/off of lighting and split type air-conditioner of the living room and dining room. Please refer to the sales brochure for details of fittings, finishes and appliances to be provided in residential properties.

此智能家居系統之家居智能控制器為將於住宅物業提供的設備，可控制客廳及飯廳的燈光及分體式空調機開關。有關將於住宅物業提供的裝置、裝修物料及設備之詳情，請參閱售樓說明書。

Note:

The vendor reserves the right to substitute any fittings, finishes and appliances with other fittings, finishes and appliances in accordance with the provisions of the agreement for sale and purchase.

附註：

賣方保留權利按買賣合約條款以其他裝置、裝修物料及設備代替任何裝置、裝修物料及設備。

O A S I S
K A I T A K

The air grilles, sprinklers, visual advisory alarms, emergency lighting, exit signs, speakers and features marked with green dots “●” in this show flat are the in-situ built-in facilities of this venue. There are no such facilities in the residential properties of the Development and it may not be possible to install such facilities in the actual property. For fittings, finishes and appliances of the residential properties in the Development, please refer to the sales brochure.

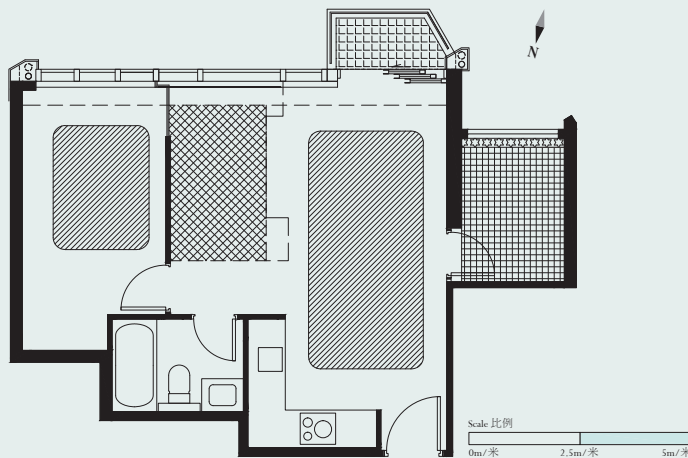
本示範單位內有綠色圓點“●”標示之通風格柵、消防花灑頭、視像警報器、應急照明燈、出路指示牌、擴音器及其他裝置是為本場地現場固有的配套設施。發展項目之住宅物業並沒有此等設施，亦未必可能裝設此等設施。有關發展項目之住宅物業的裝置、裝修物料及設備，請參閱售樓說明書。


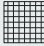
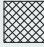


O A S I S
K A I T A K

The floor-to-ceiling height of different parts of this show flat is less than the corresponding projected height of the parts concerned of the residential property as specified in the sales brochure by the relevant difference as set out in the plan below due to physical constraints of the venue. Due to the finishes on the floor and ceiling of this show flat, it is possible that there will be a difference between the floor-to-ceiling height of the show flat obtained by taking measurements inside the show flat (it will not be able to take into account of the thickness of the aforesaid finishes when taking such measurements) and the projected height (less the aforesaid height difference) of the corresponding residential property.

此示範單位不同部分的樓底高度(地面量度至天花板計)，低於售樓說明書內有關住宅物業相關部分的相應預計高度(差距見下圖)，原因是現場環境所限。因示範單位地板及天花均有裝修物料，於示範單位內量度出之樓底高度(地面量度至天花板計)(如此量度得出之樓底高度未能將上述裝修物料厚度納入計算之中)可能會與有關住宅物業減去上述高度差距後的相應預計高度不同。

Please see the below ceiling plan for the extent of lower ceiling height area.
有關較低天花高度之範圍，請參閱下圖。



-  Floor-to-ceiling height is less than the corresponding projected height of the parts concerned of the residential property as specified in the sales brochure by 340mm
此部分的樓底高度(地面量度至天花板計)低於售樓說明書內有關住宅物業相關部分的相應預計高度 340 毫米
-  Floor-to-ceiling height is less than the corresponding projected height of the parts concerned of the residential property as specified in the sales brochure by 540mm
此部分的樓底高度(地面量度至天花板計)低於售樓說明書內有關住宅物業相關部分的相應預計高度 540 毫米
-  Floor-to-ceiling height is less than the corresponding projected height of the parts concerned of the residential property as specified in the sales brochure by 490mm
此部分的樓底高度(地面量度至天花板計)低於售樓說明書內有關住宅物業相關部分的相應預計高度 490 毫米
-  Floor-to-ceiling height is less than the corresponding projected height of the parts concerned of the residential property as specified in the sales brochure by 240mm
此部分的樓底高度(地面量度至天花板計)低於售樓說明書內有關住宅物業相關部分的相應預計高度 240 毫米
-  Floor-to-ceiling height is less than the corresponding projected height of the parts concerned of the residential property as specified in the sales brochure by 440mm
此部分的樓底高度(地面量度至天花板計)低於售樓說明書內有關住宅物業相關部分的相應預計高度 440 毫米

O A S I S
K A I T A K

The outdoor units of the split type air-conditioners of Unit B on 28/F, Tower 2 will be installed on the A/C platform of the unit, which forms part of the common area of the Development. Due to physical constraint of the venue, such A/C platform and outdoor units of the split type air-conditioners are not provided in this show flat. For details and location of the A/C platform and the fittings, finishes and appliances, please refer to the sales brochure.

第 2 座 28 樓 B 單位的分體式空調機的室外機裝置於空調機平台。該空調機平台為發展項目的公用地方。由於現場環境所限，本示範單位並沒有展示該空調機平台及分體式空調機的室外機。有關空調機平台及裝置、裝修物料及設備的資料及位置，請參閱售樓說明書。

O A S I S
K A I T A K

Purchaser of Unit B on 28/F of Tower 2 of the Development (the "Unit") will be provided with the furniture and objects displayed in the show flat as set out in the table below (the "Gift Items") free of charge. No warranty, maintenance or representation whatsoever is given by the Vendor or any person on behalf of the Vendor in any respect regarding any of the Gift Items or the conditions, state, quality or fitness of any of the Gift Items or as to whether any of the Gift Items is or will be in working condition. The Gift Items will be delivered to the Purchaser upon completion of the sale and purchase of the Unit in such condition as at completion together with the Unit. The Vendor reserves the right to replace all or any of the Gift Items with furniture or objects of comparable quality, and on delivery the Gift Items may have variations in colour, measurement, grain, texture and/or workmanship from those displayed in the show flat.

The Gift Items displayed in this show flat are not standard fittings, finishes and appliances to be provided in the other residential properties. For standard fittings, finishes and appliances to be provided in the other residential properties please refer to the Sales Brochure.

The provision of the Gift Items is subject to the price list and the relevant transaction documents. The Vendor reserves the right to withdraw and amend this benefit from time to time.

購買發展項目第2座28樓B室(「該單位」)之買方可免費獲贈下列展示於示範單位之傢俱和物件(「該等贈品」)。賣方或其代表不會就任何該等贈品或其狀況、狀態、品質及性能，及其是否在可運作狀態作出任何保證、保養或陳述。該等贈品將於該單位成交日以其成交時之狀況連同該單位交予買方。賣方保留權利以品質相若的傢俱或物件去替代全部或部份該等贈品，而該等贈品在交付時可能在顏色、尺寸、紋理、質地及/或手工方面與現時展示於示範單位內者出現差別。

展示於本示範單位之該等贈品並非其他住宅物業之交樓標準裝置、裝修物料及設備。有關其他住宅物業之交樓標準裝置、裝修物料及設備，請參閱售樓說明書。

該等贈品之提供以價單及相關交易文件為準。賣方保留權利不時撤回及修改此優惠。

Description 描述	Quantity 數量	Description 描述	Quantity 數量	Description 描述	Quantity 數量
Living Room 客廳					
Sofa 沙發	1	Painting 畫	1	Book 書	35
Rug 地毯	1	Candle Stand 蠟燭台	2	Decorative Object 裝飾物	5
Coffee Table 茶几	2	Vase 花瓶	7	Photo Frame 相架	3
Cushion 咕啞	7	Tray 托盤	3	Candle 蠟燭	4
Paper Knife and Magnifier Set 信刀及放大鏡組合	1	Rubbish Bin 垃圾桶	1	Pen Holder 筆筒	1
Telescope 望遠鏡	1	Chair 椅子	1	Box 盒子	2
Time Funnel 時間漏斗	1	Glass Bottle 玻璃瓶	1	Chaise Longue 貴妃椅	1
Study Table 書枱	1	Floor Lamp 地燈	1	Bowl 盆子	2
Fixed Stainless Steel Shelves, Natural Stone Wooden Drawer and Glass Screen 不銹鋼固定層架、天然石木抽屜及玻璃屏風	1	Fixed Stainless Steel Frame Glass Screen 不銹鋼框固定玻璃屏風	1	Curtain and Sheer Track 窗簾窗紗路軌	4
Curtain 窗簾	3	Sheer 窗紗	2	Wooden Pelmet 木擋板	2
Dining Room & Open Kitchen 飯廳及開放式廚房					
Glass 玻璃杯	8	Book 書	2	Wine 酒	2
Bottle 瓶子	1	Tray 托盤	1	Plate 碟	4
Vase 花瓶	1	Table Mat 餐桌墊	2	Napkin & Napkin Ring 餐巾及餐巾環	2
Artificial Flower 人造花	3	Knife 餐刀	1	Fork 餐叉	1
Artificial Flower Arrangement with Glass 人造花佈置	2	Spoon 餐匙	2	Cake Holder 蛋糕架	1
Artificial Food 人造食物	10	Decanter 醒酒瓶	1		
Master Bedroom 主人睡房					
Duvet Cover and Insert 羽絨被	1	Mattress 床褥	1	Bedside Pendant Lamp 床邊吊燈	2
Pillow 枕頭	4	Bottle 瓶子	1	Sculpture 雕塑	1
Bed Sheet 床單	1	Glass 玻璃杯	2	Tie 領帶	4
Blanket 毯	1	Side Table 角几	2	Backpack 背包	1
Tray 托盤	1	Photo Frame 相架	3	Belt 皮帶	2
Cup 杯	4	Book 書	1	Scarf 圍巾	3
Fragrance Diffuser 香薰	1	Clothes 衣服	9	Hanger 衣架	9
Bedroom 1 睡房 1					
Duvet Cover and Insert 羽絨被	1	Book 書	4	Clothes 衣服	7
Pillow 枕頭	2	Toy 玩具	12	Hanger 衣架	4
Bed Sheet 床單	1	Table Lamp 枱燈	1	Backpack 背包	1
Mattress 床褥	1	Cushion 咕啞	1	Photo Frame 相架	2
Bathroom 浴室					
Tray 托盤	1	Lotion Bottle 乳液瓶	2	Candle 蠟燭	2
Soap Dish 肥皂盤	1	Towel 毛巾	8	Soap 肥皂	2
Toilet Paper 廁紙	1				

The floor-to-floor height of the living room and dining room of the actual unit:

3150mm

Due to physical constraints of the venue, the floor-to-ceiling height of the living room and dining room (or part(s) thereof, if applicable) (the “Area Concerned”) of this show flat is less than the corresponding projected height of the Area Concerned of the residential property as specified in the sales brochure by approximately:

340mm

(remark: please refer to the relevant notice at the entrance of this show flat for details)

實際單位的客廳及飯廳的層與層之間的高度：

3150毫米

因現場環境所限，此示範單位的客廳及飯廳（或其部分（如適用））（「相關範圍」）之樓底高度（地面量度至天花板計），低於售樓說明書內有關住宅物業的相關範圍之相應預計高度約：

340毫米

（註：詳情請參閱本示範單位入口之相關告示）

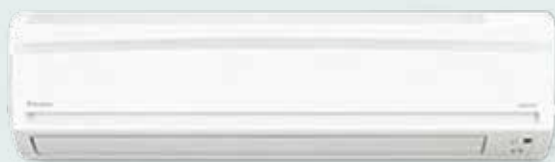
Notice 2 告示 2

The air-conditioner in the actual unit will be installed inside false ceiling. Such air-conditioner has not been provided in this show flat.

Please refer to the photograph below showing the air-conditioner of the unit.

實際單位所提供的空調機將會安裝於假天花內。該空調機在此示範單位內並沒有提供。

單位提供之空調機請參閱下述的相片。



Photograph shown for illustration only.
此圖片僅供參考。

O A S I S
K A I T A K

There will be a wireless router (for Home Automation System) inside the false ceiling or bulkhead here in the actual unit. Such wireless router has not been provided in this show flat.

實際單位此處之假天花或假陣內將有無線路由器（用於家居智能系統）。該無線路由器在此示範單位內並無提供。

O A S I S
K A I T A K

Notice 3 告示 3

Ventilation fan will be hidden by the false ceiling in the kitchen in the actual unit. The ventilation fan has not been provided in this show flat.

實際單位廚房內之抽氣扇將被假天花隱藏。該抽氣扇在此示範單位內並無提供。

O A S I S
K A I T A K

There will be conduits and/or mechanical and electrical provisions inside the false ceiling here in the actual unit. Such conduits and/or mechanical and electrical provisions are not provided in this show flat.

實際單位此處之假天花內將有喉管及/或機電設備。該等喉管及/或機電設備在此示範單位中並無提供。

O A S I S
K A I T A K

There will be pipes inside this cabinet in the kitchen of the actual unit. Those pipes have not been installed in this show flat/there could be differences in number, size, location, alignment, etc. between those pipes installed in this show flat and those pipes installed in the actual unit. There will be openings in different partitions of this cabinet in the actual unit for the installation of pipes. Such openings are not provided in this show flat.

實際單位此廚櫃內將有喉管。該等喉管在此示範單位內並無安裝或此示範單位內之該等喉管與實際單位之該等喉管在數目、尺寸、位置、路線等可能有分別。實際單位之廚櫃內之不同間隔板將有開口位安裝喉管。該等開口位在此示範單位內並無提供。

O A S I S
K A I T A K

Unit B, 28/F, Tower 2 – Open Kitchen Appliances 第 2 座 28 樓 B 單位 – 開放式廚房設備

Appliances to be provided or installed in the Open Kitchens of Unit B on 6-12/F, 15-23/F, 25-33/F, Tower 2
第 2 座 6 至 12 樓、15 至 23 樓、25 至 33 樓之 B 單位之開放式廚房均配備或安裝以下設備

Appliance	設備	Brand 品牌
Duct Type Ventilation Fan	風喉式抽氣扇	Gelec
Cooker Hood	抽油煙機	Siemens 西門子
Induction Hob	電磁煮食爐	Siemens 西門子
Oven with Microwave	微波焗爐	Siemens 西門子
Fridge-Freezer	雪櫃連冰箱	Siemens 西門子
Washer Dryer	洗衣乾衣機	Siemens 西門子
Electric Water Heater	電熱水爐	Stiebel Eltron 斯寶亞創

Note: The vendor reserves the right to substitute any fittings, finishes and appliances with other fittings, finishes and appliances in accordance with the provisions of the agreement for sale and purchase.

附註：賣方保留權利按買賣合約條款以其他裝置、裝修物料及設備代替任何裝置、裝修物料及設備。

Notice 4 告示 4

This show flat is for showing the residential property concerned only and does not constitute and shall not be construed as constituting any representation or warranty in respect of the view from any residential property in the Development or the external appearance of any part of the Development, whether or not the external finishes, external pipes, or appearance of any part of the Development have been shown.

本示範單位僅作展示相關住宅物業之用，並不構成亦不得詮釋為任何關於發展項目任何住宅物業景觀或發展項目任何部份之外觀之陳述或保證，不論是否可能有展示發展項目任何部份之外牆裝修物料、外在喉管或外觀。

O A S I S
K A I T A K

The railing and floor and wall finishes of this balcony are standard provisions upon handover. The balcony is a non-enclosed area and no alteration and addition shall be made or allowed.

此露台之圍欄、地台及牆身為交樓標準。露台為不可封閉之地方，任何人不得對其作出任何改動或加建。

O A S I S
K A I T A K

The floor-to-floor height of the balcony of the actual unit:

3150mm

Due to physical constraints of the venue, the floor-to-ceiling height of the balcony (or part(s) thereof, if applicable) (the “Area Concerned”) of this show flat is less than the corresponding projected height of the Area Concerned of the residential property as specified in the sales brochure by approximately:

240mm

(remark: please refer to the relevant notice at the entrance of this show flat for details)

實際單位的露台的層與層之間的高度：

3150毫米

因現場環境所限，此示範單位的露台（或其部分（如適用））（「相關範圍」）之樓底高度（地面量度至天花板計），低於售樓說明書內有關住宅物業的相關範圍之相應預計高度約：

240毫米

（註：詳情請參閱本示範單位入口之相關告示）

O A S I S
K A I T A K

The floor-to-floor height of the living room of the actual unit:

3150mm

Due to physical constraints of the venue, the floor-to-ceiling height of the living room (or part(s) thereof, if applicable) (the “Area Concerned”) of this show flat is less than the corresponding projected height of the Area Concerned of the residential property as specified in the sales brochure by approximately:

490mm

(remark: please refer to the relevant notice at the entrance of this show flat for details)

實際單位的客廳的層與層之間的高度：

3150毫米

因現場環境所限，此示範單位的客廳（或其部分（如適用））（「相關範圍」）之樓底高度（地面量度至天花板計），低於售樓說明書內有關住宅物業的相關範圍之相應預計高度約：

490毫米

（註：詳情請參閱本示範單位入口之相關告示）

O A S I S
K A I T A K

The air-conditioner in the actual unit will be installed inside false ceiling. Such air-conditioner has not been provided in this show flat.

Please refer to the photograph below showing the air-conditioner of the unit.

實際單位所提供的空調機將會安裝於假天花內。該空調機在此示範單位內並沒有提供。

單位提供之空調機請參閱下述的相片。



Photograph shown for illustration only.
此圖片僅供參考。

O A S I S
K A I T A K

Notice 7 告示 7

The air-conditioner in the actual unit will be installed inside false ceiling. Such air-conditioner has not been provided in this show flat.

Please refer to the photograph below showing the air-conditioner of the unit.

實際單位所提供的空調機將會安裝於假天花內。該空調機在此示範單位內並沒有提供。

單位提供之空調機請參閱下述的相片。



Photograph shown for illustration only.
此圖片僅供參考。

O A S I S
K A I T A K

The floor-to-floor height of the master bedroom of the actual unit:

3150mm

Due to physical constraints of the venue, the floor-to-ceiling height of the master bedroom (or part(s) thereof, if applicable) (the “Area Concerned”) of this show flat is less than the corresponding projected height of the Area Concerned of the residential property as specified in the sales brochure by approximately:

340mm

(remark: please refer to the relevant notice at the entrance of this show flat for details)

實際單位的主人睡房的層與層之間的高度：

3150毫米

因現場環境所限，此示範單位的主人睡房（或其部分（如適用））（「相關範圍」）之樓底高度（地面量度至天花板計），低於售樓說明書內有關住宅物業的相關範圍之相應預計高度約：

340毫米

（註：詳情請參閱本示範單位入口之相關告示）

O A S I S
K A I T A K

Notice 8 告示 8

Ventilation fan will be hidden by the false ceiling in the bathroom in the actual unit. The ventilation fan has not been provided in this show flat.

實際單位此浴室內之抽氣扇將被假天花隱藏。該抽氣扇在此示範單位內並無提供。

O A S I S
K A I T A K

There will be conduits and/or mechanical and electrical provisions inside the false ceiling here in the actual unit. Such conduits and/or mechanical and electrical provisions are not provided in this show flat.

實際單位此處之假天花內將有喉管及/或機電設備。該等喉管及/或機電設備在此示範單位中並無提供。

O A S I S
K A I T A K

There will be pipes inside this cabinet in the bathroom of the actual unit. Those pipes have not been installed in this show flat/there could be differences in number, size, location, alignment, etc. between those pipes installed in this show flat and those pipes in the actual unit. There will be openings in different partitions of this cabinet in the actual unit for the installation of the pipes. Such openings are not provided in this show flat.

實際單位此浴室之櫃內將有喉管。該等喉管在此示範單位內並無安裝/此示範單位內之該等喉管與實際單位之該等喉管在數目、尺寸、位置、路線等可能有分別。實際單位之此櫃內之不同間隔板將有開口位安裝喉管。該等開口位在此示範單位內並無提供。

O A S I S
K A I T A K

Unit B, 28/F, Tower 2 – Bathroom Appliances 第 2 座 28 樓 B 單位 – 浴室設備

Appliances to be provided or installed in the Bathrooms of Unit B on 6-12/F, 15-23/F, 25-33/F, Tower 2
第 2 座 6 至 12 樓、15 至 23 樓、25 至 33 樓之 B 單位之浴室均配備或安裝以下設備

Appliance	設備	Brand 品牌
Thermo Ventilator	浴室寶	Panasonic
Duct Type Ventilation Fan	風喉式抽氣扇	Ostberg

Note: The vendor reserves the right to substitute any fittings, finishes and appliances with other fittings, finishes and appliances in accordance with the provisions of the agreement for sale and purchase.

附註：賣方保留權利按買賣合約條款以其他裝置、裝修物料及設備代替任何裝置、裝修物料及設備。

Notice 9 告示 9

There will be angle valve and flexible tube for the water closet in the actual unit. Such valve and tube have not been installed in this show flat.

實際單位之坐廁有曲尺閥及撓性喉管。該等曲尺閥及喉管在此示範單位內並無安裝。

O A S I S
K A I T A K

Notice 10 告示 10

A wall-mounted type air-conditioner will be provided in Bedroom 1 in the actual unit. Such air-conditioner has not been provided in this show flat, due to the physical constraint of the venue (the floor-to-ceiling height of the part of the show flat concerned being less than the corresponding projected height of the actual unit by 540mm).

Please refer to the photograph below showing the air-conditioner of the unit.

實際單位的睡房 1 將會提供掛牆式空調機。因現場環境所限（本示範單位相關部分樓面至天花高度比實際單位之相應預計高度少 540 毫米），該空調機在此示範單位內並沒有提供。

單位提供之空調機請參閱下述的相片。



Photograph shown for illustration only.
此圖片僅供參考。

O A S I S
K A I T A K

The floor-to-floor height of the bedroom 1 of the actual unit:

3150mm

Due to physical constraints of the venue, the floor-to-ceiling height of the bedroom 1 (or part(s) thereof, if applicable) (the “Area Concerned”) of this show flat is less than the corresponding projected height of the Area Concerned of the residential property as specified in the sales brochure by approximately:

440/540mm

(remark: please refer to the relevant notice at the entrance of this show flat for details)

實際單位的睡房 1 的層與層之間的高度：

3150毫米

因現場環境所限，此示範單位的睡房 1 (或其部分 (如適用)) (「相關範圍」) 之樓底高度 (地面量度至天花板計)，低於售樓說明書內有關住宅物業的相關範圍之相應預計高度約：

440/540毫米

(註：詳情請參閱本示範單位入口之相關告示)

Notice 11 告示 11

This (remark: refers to the area outside the external wall or balustrade) is the void area and does not form part of the residential property of the Development.

此處（註：指外牆或圍欄外之範圍）為中空地方及並不構成發展項目的住宅物業一部分。

O A S I S
K A I T A K